



# GAT MONTHLY MEMBERSHIP PROGRESS REPORT

Results as of: 5/31/2024

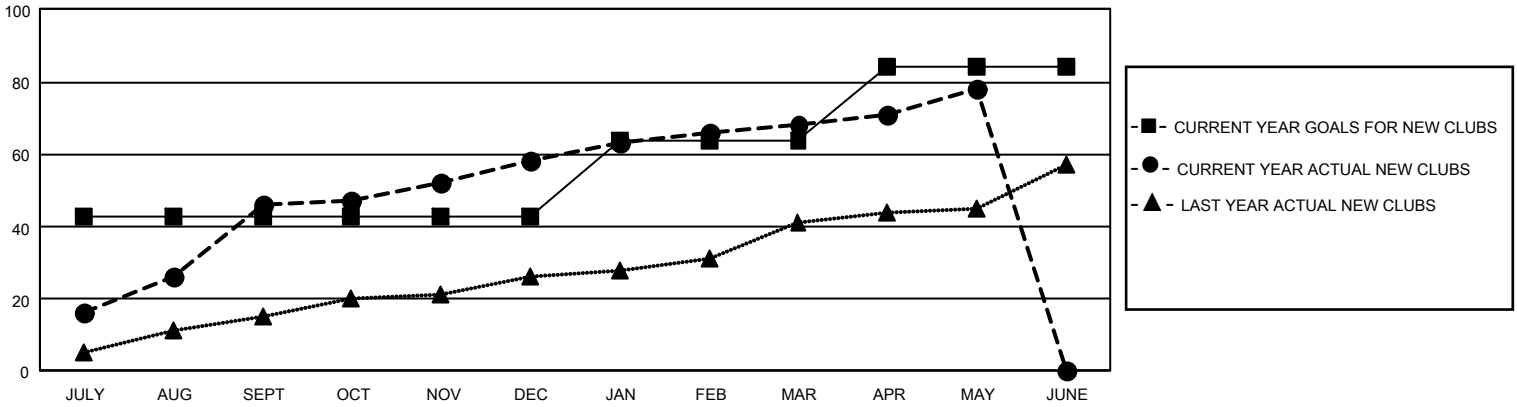
## GMT Constitutional Area 6 - I, Group F

REPORT DOES NOT INCLUDE CLUBS IN UNDISTRICTED AREAS.

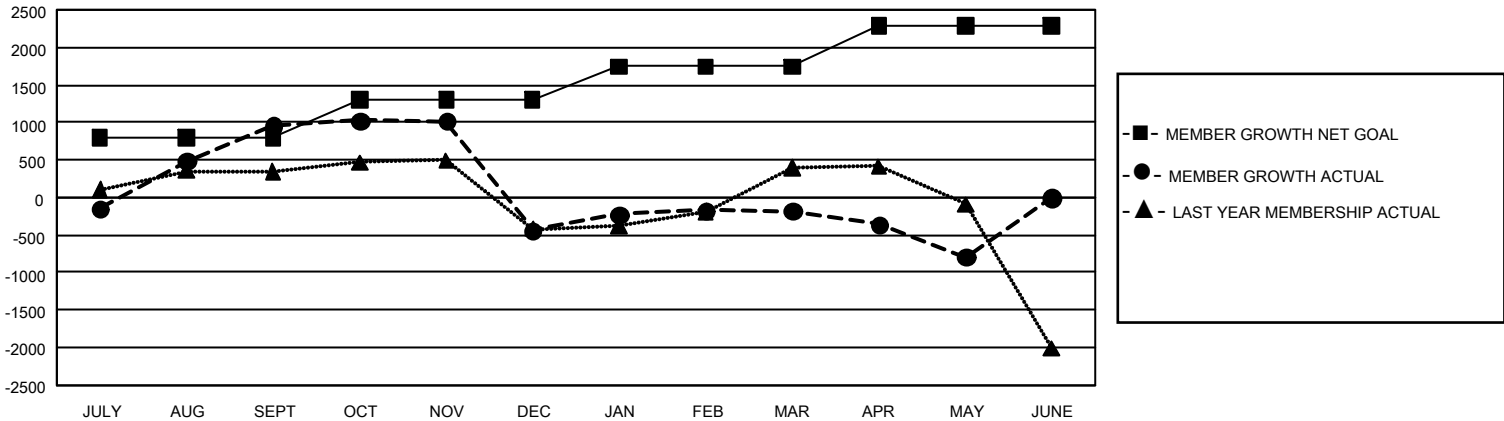
Clubs			
RESULTS FOR 2023-2024			
QUARTER	NEW CLUB GOAL	NEW CLUBS	DROPPED CLUBS
JULY/AUG/SEPT	129	46	9
OCT/NOV/DEC	0	12	32
JAN/FEB/MAR	63	10	12
APR/MAY/JUNE	60	10	4

Members			
RESULTS FOR 2023-2024			
QUARTER	MEMBER GROWTH NET GOAL	MEMBER GROWTH ACTUAL	DROPPED MEMBERS ACTUAL (including transfers)
JULY/AUG/SEPT	790	2,914	1,565
OCT/NOV/DEC	515	1,227	2,484
JAN/FEB/MAR	442	1,083	643
APR/MAY/JUNE	545	790	1,304

GOALS AND ACTUAL NEW CLUBS CUMULATIVE



GOALS AND ACTUAL MEMBERS CUMULATIVE



<b>DROPPED CLUBS: 57</b>	683 CLUBS OF 1,210 ADDED 1 OR MORE NEW MEMBERS	<b>GENDER DISTRIBUTION</b>	
		MALE 21,922 (70.76%) FEMALE 9,044 (29.19%) NON BINARY 0 (0.00%) PREFER NOT TO ANSWER 13 (0.04%)	
<b>DROPPED MEMBERS</b>		<a href="#">CLICK HERE FOR CUMULATIVE MEMBERSHIP DATA</a>	TOTAL FAMILY UNIT MEMBERS 15,116
DECEASED 106 CLUB CANCELLED 794 OTHER 5,088 <b>TOTAL 5,988</b>	FAMILY MEMBERS PAYING HALF DUES 8,985		